



**Up to 110
wind turbines**



**Battery Energy
Storage System**



**Employment
opportunities**



**Community
Benefits Fund**

The Marmadua Energy Park is a proposed renewable energy project located north of Kumberilla State Forest, about 22 km from Tara and 37 km from Dalby, in the Western Downs Regional Council Local Government Area.

The Marmadua Energy Park has the potential to generate up to 700 MW of clean, renewable energy that could power up to 480,000 homes per year. If built, the Project would help generate more than 480 jobs during construction and up to 15 jobs when fully operational. It would also deliver broader community benefits during development, construction, and operations.

The Project team is committed to partnering with the community to develop a thoughtful project that benefits locals for the lifecycle of the Project.



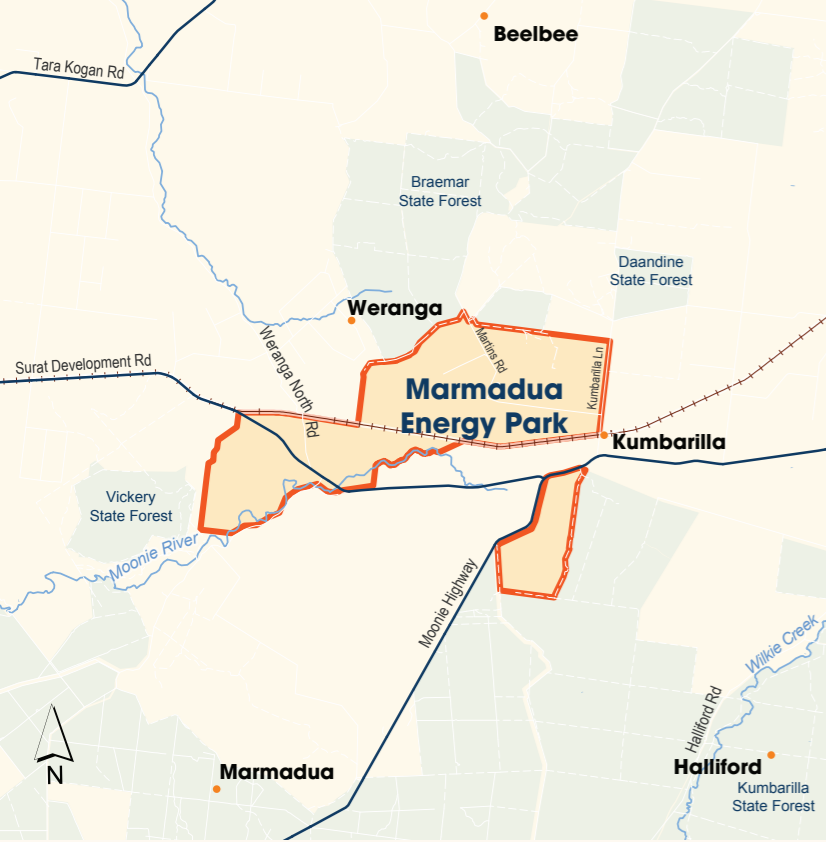
What's important to your community?

Scan the QR code to share your feedback in our community survey or visit: www.surveymonkey.com/r/marmaduaenergyproject.

Or, contact the Project team on:

Phone: 1800 282 426

Email: marmadua@cubicoinvest.com



The Marmadua Energy Park will comprise up to 110 wind turbines and a Battery Energy Storage System (BESS). The Project aims to connect to the grid via the existing Braemar to Bulli Creek 330 kV transmission lines. As these transmission lines already traverse the proposed Project site, no new overhead transmission lines would be needed for the Project.

Construction of the Project is anticipated to commence in 2027 and take approximately 24 months to complete. Once built, the Project will generate clean energy for up to 35 years.

Location

The proposed Marmadua Energy Park is located just north of the Kumbarilla State Forest, about 22 km from Tara and 37 km from Dalby, within the Western Downs Regional Council Local Government Area. The Project is located within the Western Downs Renewable Energy Zone (REZ). A REZ connects wind and solar projects in a coordinated way to optimise renewable energy developments and network infrastructure.

The Project site sits on mainly cleared land that has been used for cattle grazing and broadacre cropping. Developing a project on a site like this reduces the need for vegetation clearing. The site was chosen due to its strong wind resources, limited sensitive environmental values and easy access to existing transmission infrastructure. Where possible, the Project will be designed to integrate with existing land uses.

www.marmaduaenergypark.com.au

Project benefits

Switching to a combination of low-emission renewable energy sources will offer cleaner energy options for households and businesses throughout Queensland.

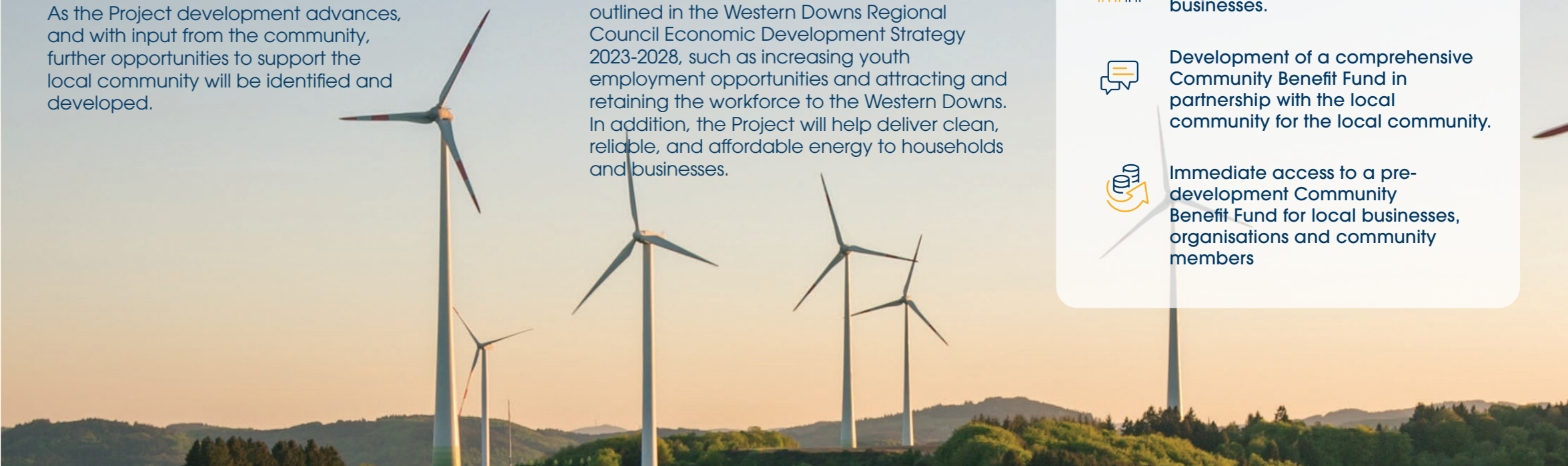
Cubico is dedicated to contributing to the community through its projects. The Marmadua Energy Park project will bring various direct and indirect economic benefits to the local area, such as more local jobs, contractor opportunities, and boosted spending and activity within the local economy.

As the Project development advances, and with input from the community, further opportunities to support the local community will be identified and developed.







The Project team is committed to ongoing engagement with the local community and other key stakeholders to gather valuable feedback, which will help shape the Project and maximise the benefits to the community.

Marmadua Energy Park will contribute to achieving the Queensland Energy and Jobs Plan's 80% renewable energy target by 2035 and the Queensland Government's commitment to net zero emissions by 2050 as legislated in the *Clean Economy Jobs Act 2024*.

The Project aligns with several strategies outlined in the Western Downs Regional Council Economic Development Strategy 2023-2028, such as increasing youth employment opportunities and attracting and retaining the workforce to the Western Downs. In addition, the Project will help deliver clean, reliable, and affordable energy to households and businesses.



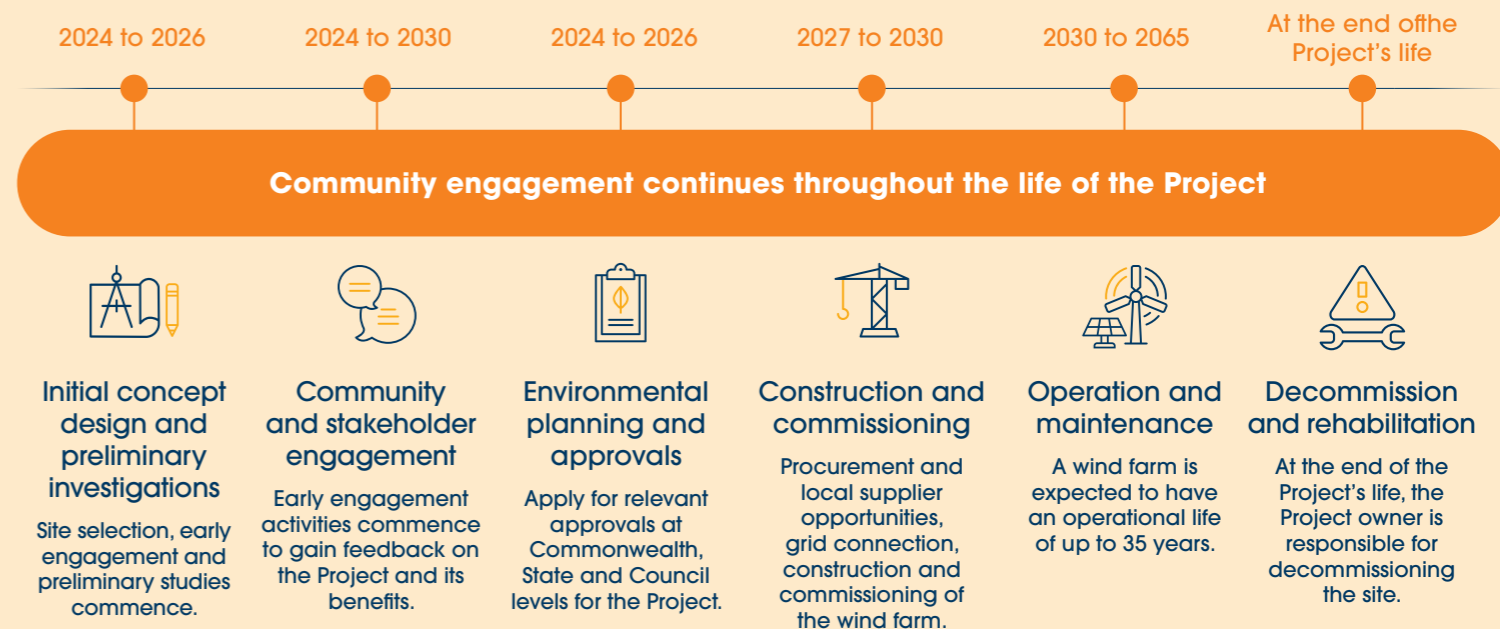
Local and regional benefits

-  Up to 700 MW of renewable energy.
-  More than 480 jobs during construction and up to 15 jobs once operational.
-  Enough energy to power the equivalent of ~480,000 houses annually when fully operational.
-  Employment and procurement opportunities for residents and businesses.
-  Development of a comprehensive Community Benefit Fund in partnership with the local community for the local community.
-  Immediate access to a pre-development Community Benefit Fund for local businesses, organisations and community members

Project approvals process and indicative timeline

The Project will require approvals from the Queensland and Australian governments. Cubico has commenced comprehensive studies and assessments that will inform the Project's design, planning and construction, ensuring potential impacts can be avoided, mitigated, and minimised.

The Project team is aiming to submit the planning application by late 2024.



Cubico's commitment to engagement

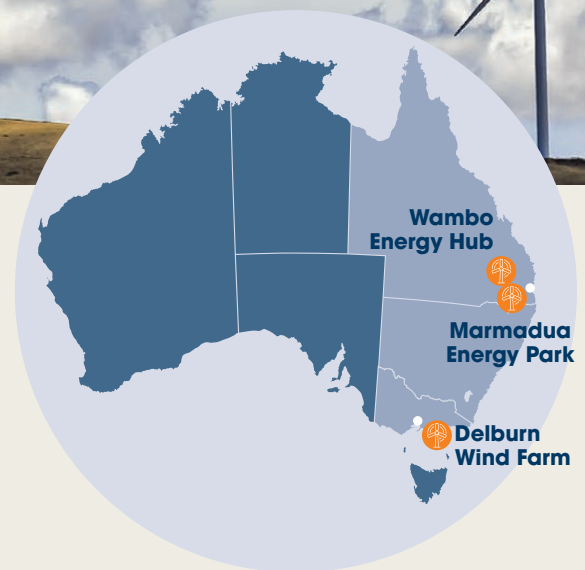
Cubico is committed to transparent, respectful, and genuine engagement with the community and all project stakeholders. We welcome and encourage diverse voices from surrounding communities and believe that every perspective plays a valuable role in shaping our projects.

As the Project progresses, we will provide many options to engage with the Project team and provide your views and feedback. These will include community meetings, information sessions, pop-up stalls, and small group and 1:1 meetings. Project newsletters, updates, surveys and up-to-date website content will also be available.

About Cubico

Cubico is one of the world's largest privately-owned renewable energy companies, working across the Americas, Europe, and Australia. Operating in Australia since 2018, Cubico has offices in Sydney, Melbourne and Brisbane. Our Australian projects include the Wambo Energy Hub in Queensland, Delburn Wind Farm in Victoria, and many early-stage developments across eastern Australia.

Cubico will be the owner and developer of the proposed Marmadua Energy Park. Cubico is committed to building trust and delivering social and environmental benefits to the areas surrounding our projects. In doing so, we are shaping the future of energy production and having a positive impact globally while creating a safer and healthier environment for the local communities where we operate.



If you're interested in being involved and staying up to date on the Marmadua Energy Park project, please contact us at:

Phone: **1800 282 426**

Email: **marmadua@cubicoinvest.com**

www.marmaduaenergypark.com.au

Cubico recognises the First Peoples of this nation and their ongoing connection to culture and country. We acknowledge First Nations Peoples as the Traditional Owners, Custodians and Lore Keepers of the world's oldest living culture and pay respects to their Elders past, present and emerging.