



Marmadua

Energy Park

Marmadua Energy Park Newsletter

Edition 1, February 2025

The Project at a glance:



Location

North of Kumbarilla State Forest, about 22km from Tara and 37km from Dalby, in the Western Downs Regional Council Local Government Area



Project status

State Development Approval submitted
Federal EPBC determination: controlled action



Turbines

Up to 110, subject to approvals
Turbine tip height up to 260 metres



Generation

700 MW that could power up to 480,000 homes per year



Job creation

Up to 480 during construction, 15 permanent roles once the project is operational



Benefit sharing

Immediate access to pre-development fund for local businesses, organisations and community members
Community Benefit Fund in place for the life of the Project



Grid connection

Via the existing Braemar to Bulli Creek 330 kV transmission lines
No new overhead transmission lines required



Project lifespan

Up to 35 years

Welcome to the first Marmadua Energy Park Newsletter

In this edition:

- Project update and timeline
- EPBC responses
- Development Application update
- Engagement activities to date
- Upcoming engagement opportunities

We're thrilled to bring you the first edition of the Marmadua Energy Park newsletter. This will be a regular way to share updates, key milestones and details about how you can stay involved as we progress this important renewable energy project.

In December 2024, the Project team hosted an online information session where we provided updates on the Project, including the proposed turbine layout, visual assessments, and the potential benefits the Marmadua Energy Park could bring to the community. More details about the online information session are included in this newsletter.

Since then, a key milestone was achieved with the submission of the Development Application to the Queensland Government, which is now under assessment by SARA as part of the approval process.

We are continuing to shape the community benefits program associated with the Project and invite you to share your thoughts on how this funding could best support the local community. To make this process easy, we have developed a short survey, which should take only a couple of minutes to complete. Scan the QR code on this page and complete the online survey – your insights are vital to ensuring the program delivers meaningful and lasting benefits to the region.

Finally, we're looking forward to being back out in the community in 2025 to continue engaging with you, sharing updates and hearing your valuable input. In the meantime, if you have any questions or concerns, please reach out to the Project team on **1800 282 246** or email marmadua@cubicoinvest.com.

Andres Araya
Development Manager – Marmadua Energy Park



What's important to your community?

Scan the QR code to share your feedback in our community survey or visit: www.surveymonkey.com/r/KS6MWVD

Project Update



We are continuing to progress the Marmadua Energy Park through the necessary environmental and planning approvals processes. This includes completing a detailed Environmental Impact Assessment covering areas such as ecology, water and social factors, like accommodation for workers.

These studies are essential to ensuring the Project is designed and delivered responsibly, with careful consideration of both environmental and community impacts. As we move through this stage, we remain focused on balancing the Project's benefits with the needs and priorities of the local community.

EPBC Referral Determination

The Marmadua Energy Park project was submitted to the Commonwealth Government for assessment under the Environment Protection and Biodiversity Conservation Act 1999 (EPBC Act). Following this review, the Department of Climate Change, Energy, the Environment and Water (DCCEEW) has determined that the Project is a controlled action.

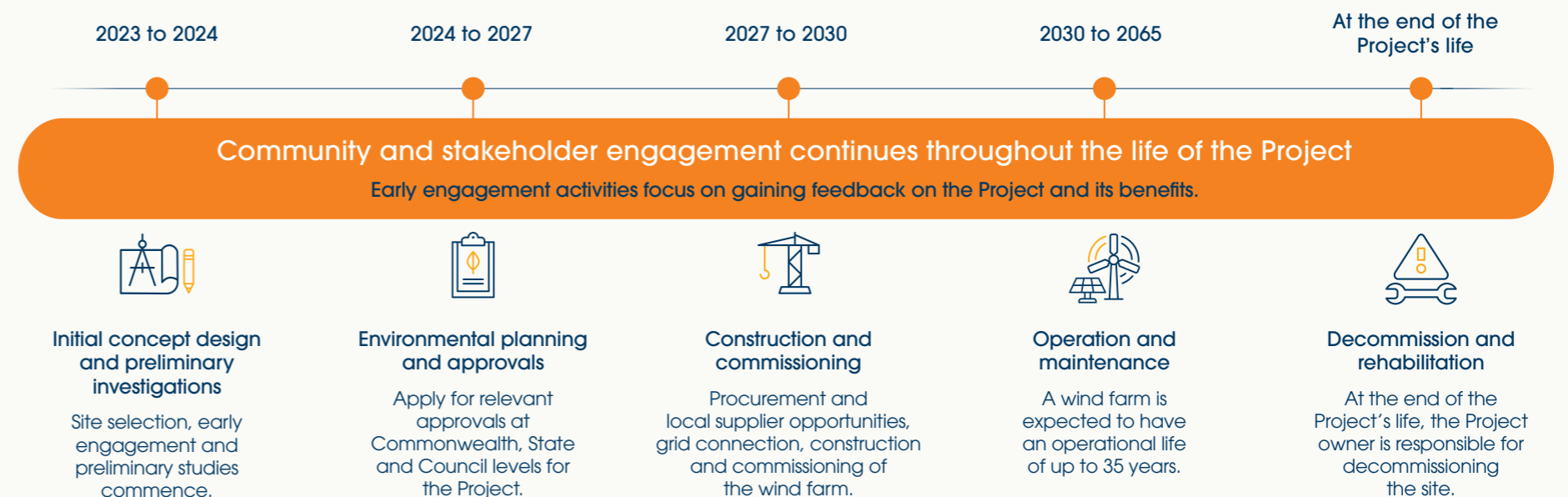
This means the Marmadua Energy Park must undergo a federal environmental assessment to ensure potential impacts on nationally significant environmental matters are properly considered and managed. While the Project's Development Application (DA) is already being assessed by the State Assessment and Referral Agency (SARA), construction cannot begin until both state and federal approvals are finalised.

The Project team will work closely with the Commonwealth Government to complete the required environmental studies and, if necessary, implement additional measures to protect important environmental values. Any requirements from this assessment will be incorporated into the Project's environmental management plans.

We remain committed to keeping the community informed and will continue engaging with landholders, stakeholders and local residents as the assessment process continues.

Indicative Project Timeline

The Project will require approvals from the Queensland and Australian governments. Cubico has commenced comprehensive studies and assessments that will inform the Project's design, planning and construction, ensuring potential impacts can be avoided, mitigated, and minimised.



Development Application Submitted

The Development Application (DA) for the Marmadua Energy Park was submitted to the Queensland Government for consideration in late 2024. Prepared in accordance with the State Code 23 guidelines for wind farm developments, the application includes comprehensive assessments of environmental, technical and social factors. These cover key areas such as ecology, noise, traffic, and visual impacts, ensuring the Project aligns with state planning and development standards.

As part of the assessment process, the Queensland Government will collaborate with relevant state departments and the Western Downs Regional Council (WDRC) to thoroughly evaluate the application.

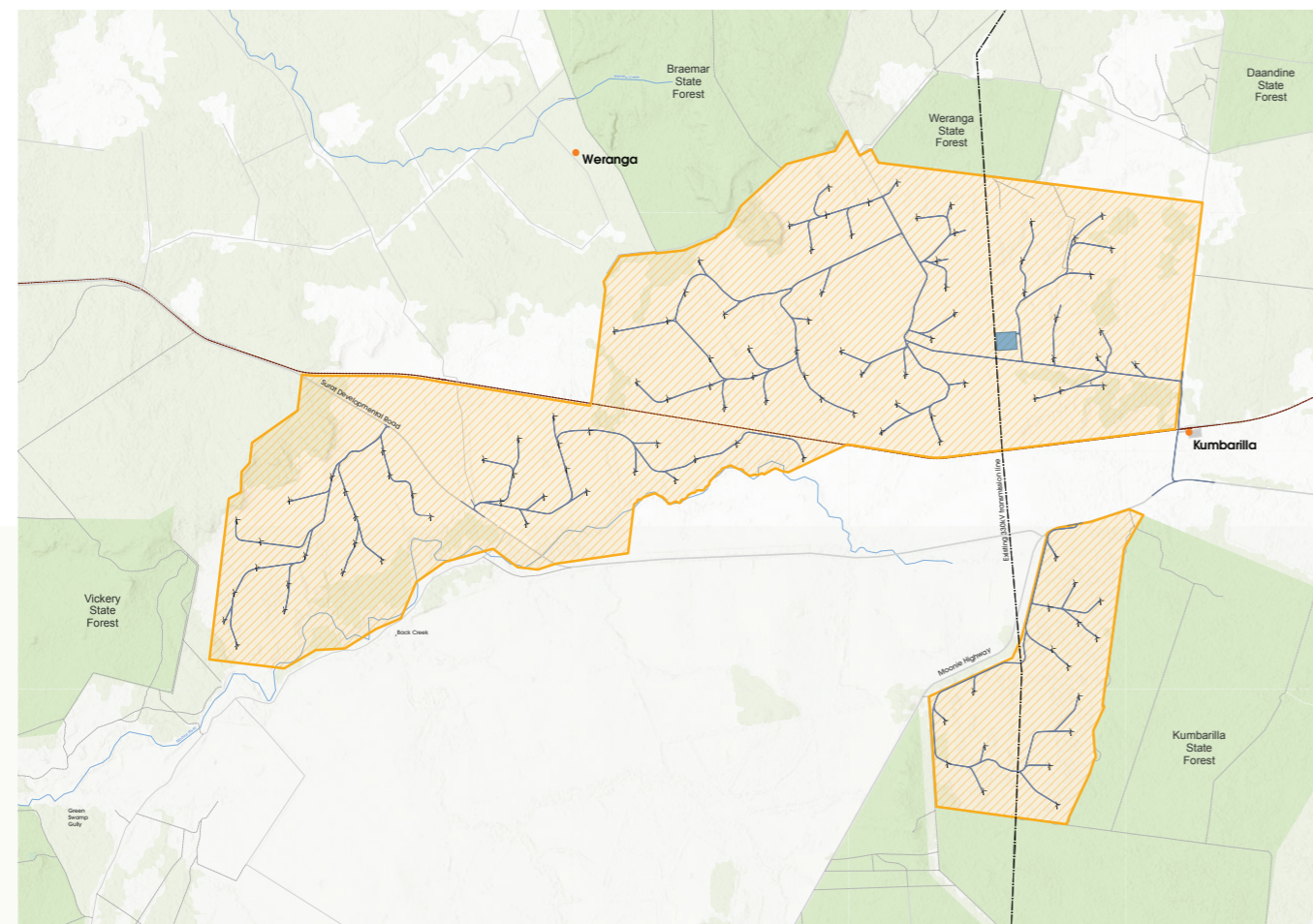
Under the State Code 23 framework, there is no formal public submission process for Development Applications. However, we remain committed to ongoing consultation with the community, providing regular updates and seeking feedback on aspects such as the community benefits program.

This submission marks a significant milestone in the Project's progression, and we will continue to work closely with stakeholders and regulatory bodies to deliver a responsible and sustainable renewable energy Project that takes local priorities into account.

Proposed Turbine Layout

The turbine layout map below shows the proposed locations of wind turbines for the Marmadua Energy Park. This layout has been designed with careful consideration of environmental, visual and technical factors to minimise impacts and optimise energy generation.

Please note that this is a proposed layout and may be subject to further refinement as the Project progresses through the environmental and planning approvals process.



Cubico Sustainable Investments Australia Pty Ltd make no warranty in relation to the accuracy, reliability, completeness or suitability of the data and does not accept liability for any loss, damage or costs, including consequential damage, in relation to any use of the data in this map.

Legend

- Project site
- ⚡ Proposed wind turbine location
- Proposed substation
- Existing 330kV transmission line
- Proposed internal roads



Engaging with the local community

The Marmadua Energy Park team has been actively engaging with the community since the Project's early stages in 2024.



September On Ground Engagement

In September 2024, we held two on-ground engagement sessions – a Community Information Session at the Weranga Rural Fire Shed, followed by a pop-up stall outside Tara Foodworks. These sessions provided an opportunity to share detailed information about the Project, answer questions and gather feedback directly from the community.

During these sessions, we heard a wide range of views. Some attendees expressed concerns about potential impacts, such as noise, landscape changes, and property values. Others highlighted the potential economic benefits the Project could bring, including opportunities for local businesses. We also had productive discussions about the proposed Community Benefits Fund. Suggestions from the community included improving water security and access, as well as creating training and apprenticeship programs to support long-term local employment.



December Online Webinar

In December 2024, we hosted an online community webinar to provide an update on the Project. During the session, we shared the latest turbine layout plans and a visual assessment showing how the turbines may appear from a key vantage point along the Surat Developmental Road. We also discussed our environmental considerations, the status of the Project's approval process and the potential benefits the Project could bring to the local community.



Upcoming Engagement Opportunities

We understand how important it is for the community to stay informed about the Marmadua Energy Park and to have opportunities to provide input on various aspects of the Project.

The Marmadua Energy Park project team will be in Dalby and Tara in March and April to host pop-up stalls at local markets.

Dalby Country Markets:

Sunday, 9 March 2025
8.30am to 12pm
Anderson Park, Sydney Street

Tara Markets:

Sunday, 6 April 2025
9am to 1pm
3 Milne Street

We look forward to being back in the community, continuing these important discussions and hearing your valuable insights as the Project progresses.



For those who missed the webinar or would like to revisit any details, a recording of the session and a copy of the presentation slides, featuring detailed maps, visuals and key Project information, can be accessed at www.marmaduaenergypark.com.au.

Cubico recognises the First Peoples of this nation and their ongoing connection to culture and country. We acknowledge First Nations Peoples as the Traditional Owners, Custodians and Lore Keepers of the world's oldest living culture and pay respects to their Elders past, present and emerging.



Did You Know?

The Clean Energy Council has published a range of fact sheets that provide valuable information about renewable energy projects, including wind farms. These fact sheets address common topics and questions, such as how wind farms can coexist with traditional farming practices, the recyclability of turbine components, and the benefits renewable energy can bring to local communities.



Scan the QR code to access these resources or visit the Clean Energy Council's website: cleanenergycouncil.org.au/factsheets

Our engagement activities for the Marmadua Energy Park include:



near-neighbour meetings and 1:1 meetings



community surveys



pop-up stalls



online webinars



community information sessions



updates via our Project website



phone calls



If you're interested in being involved and staying up to date on the Marmadua Energy Park project, please contact us at:

Phone: **1800 282 426**

Email: marmadua@cubicoinvest.com

www.marmaduaenergypark.com.au