



The Marmadua Energy Park project is a proposed renewable energy development located north of Kumbarilla State Forest, about 22km from Tara and 37km from Dalby, in the Western Downs region.

The Marmadua Energy Park has the potential to generate up to 700MW of clean, renewable energy that could power up to 480,000 homes per year.

The project is expected to generate up to 300 jobs during construction and up to 15 long-term roles when fully operational.

It will provide opportunities and benefits for the community, backed by Cubico’s commitment to making a positive difference to the regions that host our projects. We recognise that local impacts begin early, and we work to ensure the benefits are shared fairly throughout development, construction and operations, to deliver long-term outcomes for the Western Downs region.

**Marmadua Energy Park at a glance**



Up to 110 wind turbines



Generating up to 700MW of clean energy



Potential for Battery Energy Storage System (BESS)



Up to 300 jobs during construction, 15 ongoing roles



Pre-development fund supporting local community groups since 2024



Construction to start 2027  
Operations from 2030



## Project Location

The proposed Marmadua Energy Park is located north of the Kumbarilla State Forest, around 22km from Tara and 37km from Dalby, within the Western Downs Regional Council area.

The site consists mainly of cleared land used for grazing and broadacre cropping, minimising the need for vegetation clearing and allowing the project to integrate with existing land uses wherever possible.

The project is proposed to connect to the grid via the existing Braemar to Bulli Creek 330 kV transmission lines, meaning no new overhead transmission lines would be required.

The location was selected for its strong wind resources, low environmental sensitivity and suitable access to existing transmission infrastructure. These factors support a more efficient design and help reduce potential impacts on the surrounding landscape.

# Lasting Community Benefits

Cubico is committed to putting the Western Downs community first. Our approach aims to build strong, lasting partnerships, empower the community to shape local benefits and ensure the social and economic outcomes of the project extends well beyond its operational life.

The project will contribute towards the *Queensland Energy Roadmap*, and aligns with several strategies outlined in the *Western Downs Regional Council Economic Development Strategy 2023-2028*, such as increasing youth employment opportunities and attracting and retaining the workforce to Western Downs.

Findings from the Social Impact Assessment, Construction Worker's Accommodation Options Report and Workforce Accommodation and Infrastructure Report have been consolidated to assess potential workforce accommodation impacts and solutions.

### Key highlights:

- **Local jobs:** Up to 300 jobs during construction, 15 ongoing operational positions.
- **Skills development:** Partnerships with education and training providers to create renewable energy, engineering and construction careers.
- **Local suppliers:** Clear procurement targets and dedicated supplier register to maximise regional opportunities.
- **Early community funding:** Pre-development fund ensures immediate benefits for community groups and initiatives.
- **Long-term benefits:** A Community Benefits Program will ensure funding supports local infrastructure, programs, initiatives and events, and continues to evolve with community needs.

## Potential economic benefits to Queensland and the Darling Downs region

Cubico is focused on ensuring the Marmadua Energy Park delivers meaningful, long-term benefits for the Western Downs region, that extend well beyond construction. By working closely with Western Downs Regional Council, Traditional Owners, local businesses, training providers and community organisations, the project aims to support regional capability, skills development and sustainable economic growth.

The below data provides the expected economic contributions of the Marmadua Energy Park, averaged **per year** across the **construction** period (2028–2030).

Queensland	Darling Downs region
<b>\$279.47 million</b> towards the state economy	<b>\$67.82 million</b> towards the regional economy
<b>1,569</b> full time jobs created	<b>315</b> full time jobs created
	<b>\$34.45 million</b> increase in wages and salaries

The below data provides the expected economic contributions during the project's **operational life**:

**\$25.35 million** towards the state economy each year  
**15 jobs** new and ongoing jobs created

Sources include: REMPLAN, Queensland Regional Profiles, Economy ID, ABS.

## Pre-development Funding

Our Grants and Sponsorship Program for communities surrounding the Marmadua project launched in 2024. To date, a total of **\$39,500**, has been invested directly into local community events, initiatives and activities including:

**\$10,000** LifeFlight

**\$10,000** Tara and District Historical Society's construction of an all abilities access ramp at the Tara Museum

**\$7,500** Tara Festival of Culture and Camel Races

**\$6,000** WDRC Big Skies Festival

**\$5,000** Tara Futures Group's development of a professional website for the history of Tara Cemetery 1913 - 1960

**\$4,000** Tara and District Family Support Committee's Tara and District Art Exhibition

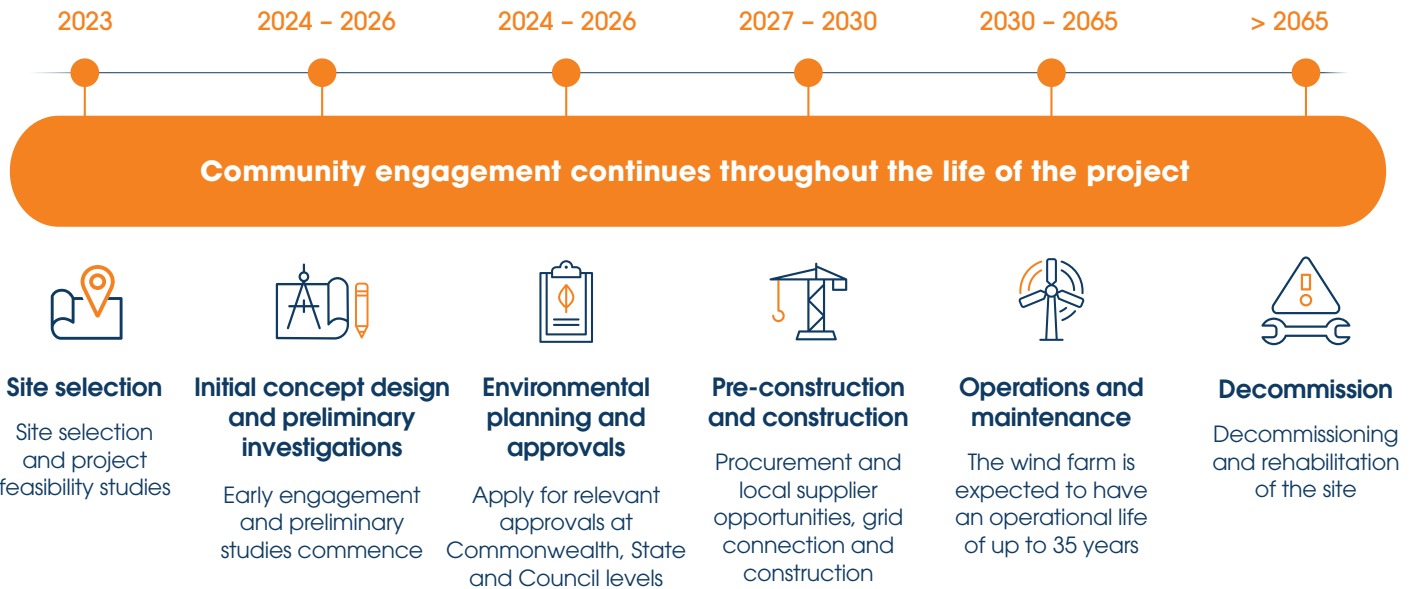
**\$2,500** Dalby Delicious and Delightful Festival

**\$1,500** Tara Futures Group's Christmas Competition

**\$500** Tara Bowls Club Ladies Carnival

## Indicative Project Timeline

Cubico is working with the Queensland and Federal governments to secure relevant approvals for the project in 2026.



### About Cubico

Cubico Sustainable Investments is one of the world's largest privately-owned renewable energy companies, working in nine countries across four continents.

Operating in Australia since 2018, our projects currently include the Wambo Wind Farm, Marmadua Energy Park and Middle Creek Energy Hub in Queensland, Curyo Wind Farm in Victoria and a number of early stage developments across QLD, VIC and NSW.

As a long-term developer and operator of our projects, we aim to build trust and maintain strong relationships with our host communities at every stage of a project's life.

*Cubico recognises the First Peoples of this nation and their ongoing connection to culture and country. We acknowledge First Nations Peoples as the Traditional Owners, Custodians and Lore Keepers of the world's oldest living culture and pay respects to their Elders past, present and emerging.*

If you're interested in being involved and staying up to date on the Marmadua Energy Park project, please contact us at:

Phone: **1800 282 426**  
 Email: [marmadua@cubicoinvest.com](mailto:marmadua@cubicoinvest.com)  
[www.marmaduaenergypark.com.au](http://www.marmaduaenergypark.com.au)

